



Case studies in Lithuania:

Climate Change Impact on Klaipeda City and Curonian Spit

Kick-Off-Meeting,
26-28 October 2005
Hamburg-Harburg

Elena Talockaite

Overview

- ≡ Presentation of Lithuanian partners;
- ≡ Brief overview of already implemented activities in Lithuania related to climate change;
- ≡ Introduction to Klaipeda City and Curonian Spit;
- ≡ Impact of 2005 winter storm in Klaipeda County;
- ≡ Main focus of the case studies in ASTRA project.

Lithuanian team

≡ Research institutions:

- Vilnius University Department of Hydrology and Climatology
- Institute of Geology and Geography

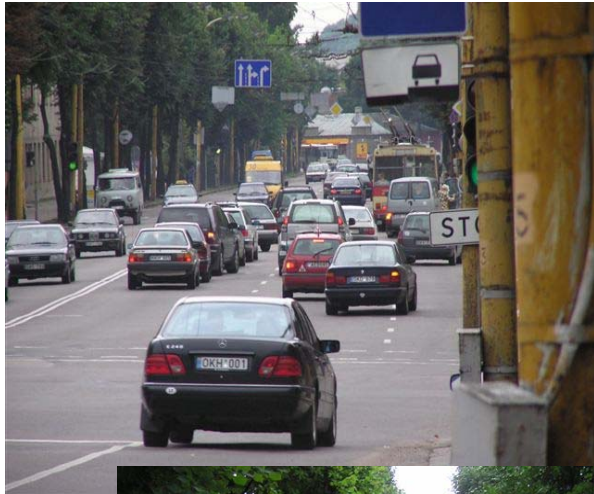
≡ Host of the case study:

- Klaipeda City Municipality

≡ Local coordinator:

- NPO Environmental Centre for Administration and Technology (ECAT-Lithuania)

Activities already implemented in Lithuania



≡ Projects:

- European flood forecasting system;
- CC impact on physical geographical processes in Lithuania;
- European climate assessment and dataset;
- CC and quantitative and qualitative fluctuations of Lithuanian water resources;
- Etc.

≡ National programs;

≡ Public awareness raising, participation.

Areas of case studies in Lithuania



Klaipeda City



- ≡ Klaipeda County - the only county in Lithuania which borders Baltic Sea;
- ≡ Klaipeda City - third largest city in Lithuania;
- ≡ 190 700 inhabitants;
- ≡ Ice-free port;
- ≡ Produces 1/10 of the country's industrial production;
- ≡ Important economical, cultural, scientific center of Lithuania.



Curonian Spit



- ≡ Sand dunes peninsula (98 km long and 0.4-4 km wide) – Baltic Sea and Curonian Lagoon;
- ≡ 52 km (territory of Lithuania) – Curonian Spit National Park;
- ≡ Home of highest moving dunes in Europe, rare plants;
- ≡ 2 400 inhabitants;
- ≡ In 2000 added to Unesco World Heritage List
 - It is an outstanding example of a landscape of sand dunes that is under constant threat from natural forces (wind and tide).

Impact of winter storm

- ≡ January 8-9, 2005;
- ≡ Main damage: buildings, livestock, forests, roads, electricity, etc.;
- ≡ Financial losses for Klaipeda County:
 - Municipalities: 723 000 Euro
 - Private sector: 516 400 Euro



Main focus in ASTRA project



≡ Case study 1: Klaipeda City

- Identification of dangerous meteorological phenomena on regional (Lithuanian) and local (Baltic Sea coast) level;
- Evaluation of climate change and tendencies of fluctuations;
- Climate change diagnosis and prognosis for coastal area;
- Evaluation of the sensitiveness for Climate Change.

Main focus in ASTRA project



≡ Case study 2: Curonian Spit

- Impact of Climate Change on ablation of Curonian Spit coast and blowing of sand dunes;
- Measures for the management of coasts and dunes.

Thank you!



Elena Talockaite
ECAT-Lithuania
Lydos 4
LT-44213 Kaunas
Lithuania

Telephone +370 37 423 053
Telefax +370 37 422 797

elena@ecat.lt
www.ecat.lt