



AstrA

Introduction to the ASTRA project
Structure, Partnership, Case studies

Michael Staudt, GTK
Kick-Off-Meeting,
26-28 October 2005
Hamburg-Harburg

Contents

- ≡ Introduction- Interreg IIB projects
- ≡ Structure -Work packages
- ≡ Partner Consortium
- ≡ Case studies
- ≡ Consortium agreement
- ≡ Nomination of WP leaders and country co-ordinators

Introduction

≡ Project title: Developing Policies & Adaptation Strategies to Climate Change in the Baltic Sea Region (ASTRA)

≡ Duration: June 2005 – December 2007

Budget

≡ ERDF funding: € 1 399 616

≡ National co-financing: € 847 205

≡ Overall project budget: € 2 246 822

Measure 1.3: Strengthening integrated development of coastal zones, islands and other specific areas

Interreg IIB projects

Important documents

- ≡ ASTRA application form
- ≡ Interreg IIB Programme manual
- ≡ Subsidy contract
- ≡ Consortium agreement between partners (in preparation, project plan has to be agreed first)

Interreg main principles:

- ≡ Transnationality
- ≡ Cross sectoral approach
- ≡ Sustainable development

INTERREG III B programmes



Alpine Space



Baltic Sea Region



Archimed



North West Europe



North Sea Region



CADSES



Atlantic Area



Westers
Mediterranean



South West Europe



Northern Periphery

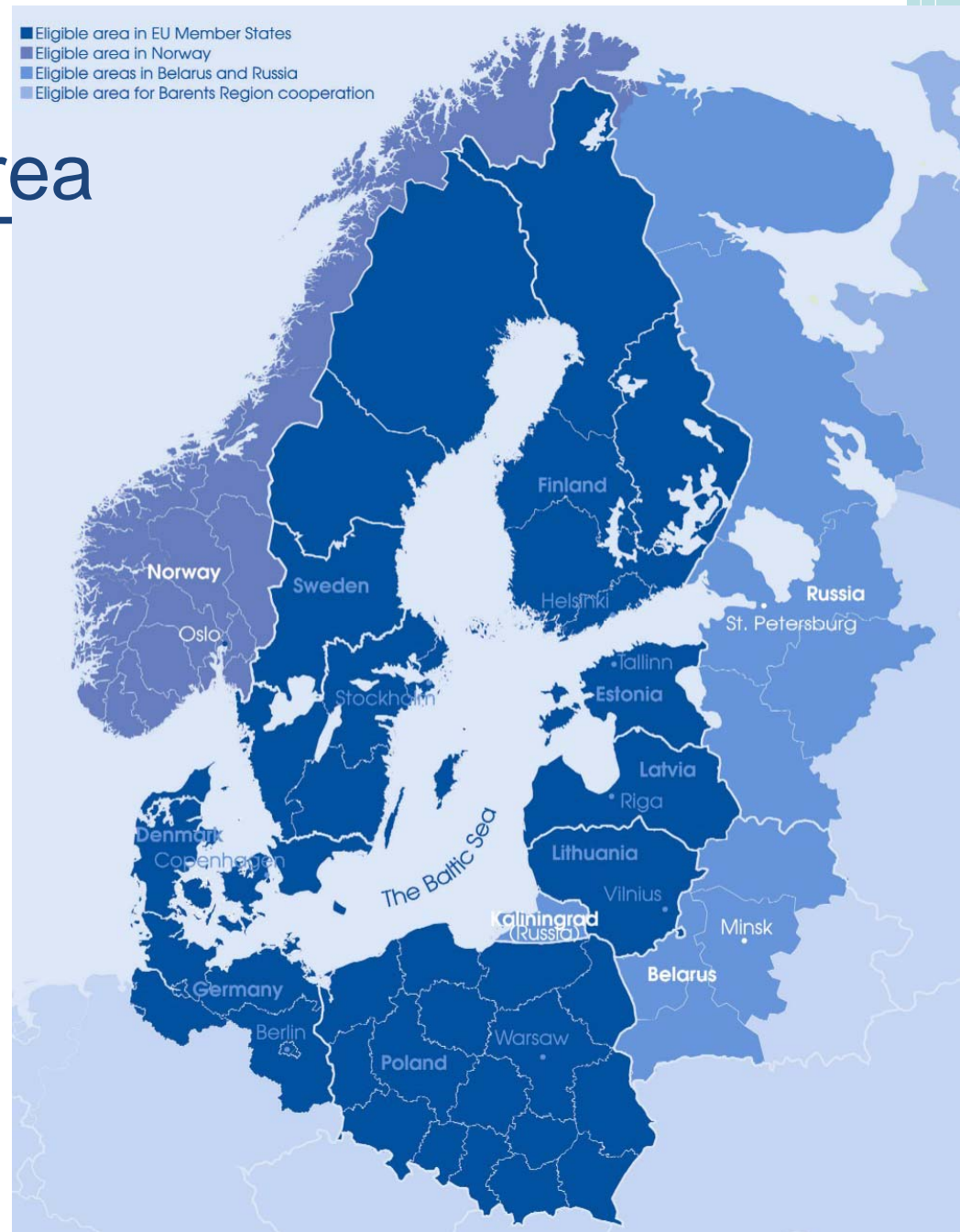


Transnational cooperation on spatial planning and regional development

Interreg IIB BSR area

Cooperation area:

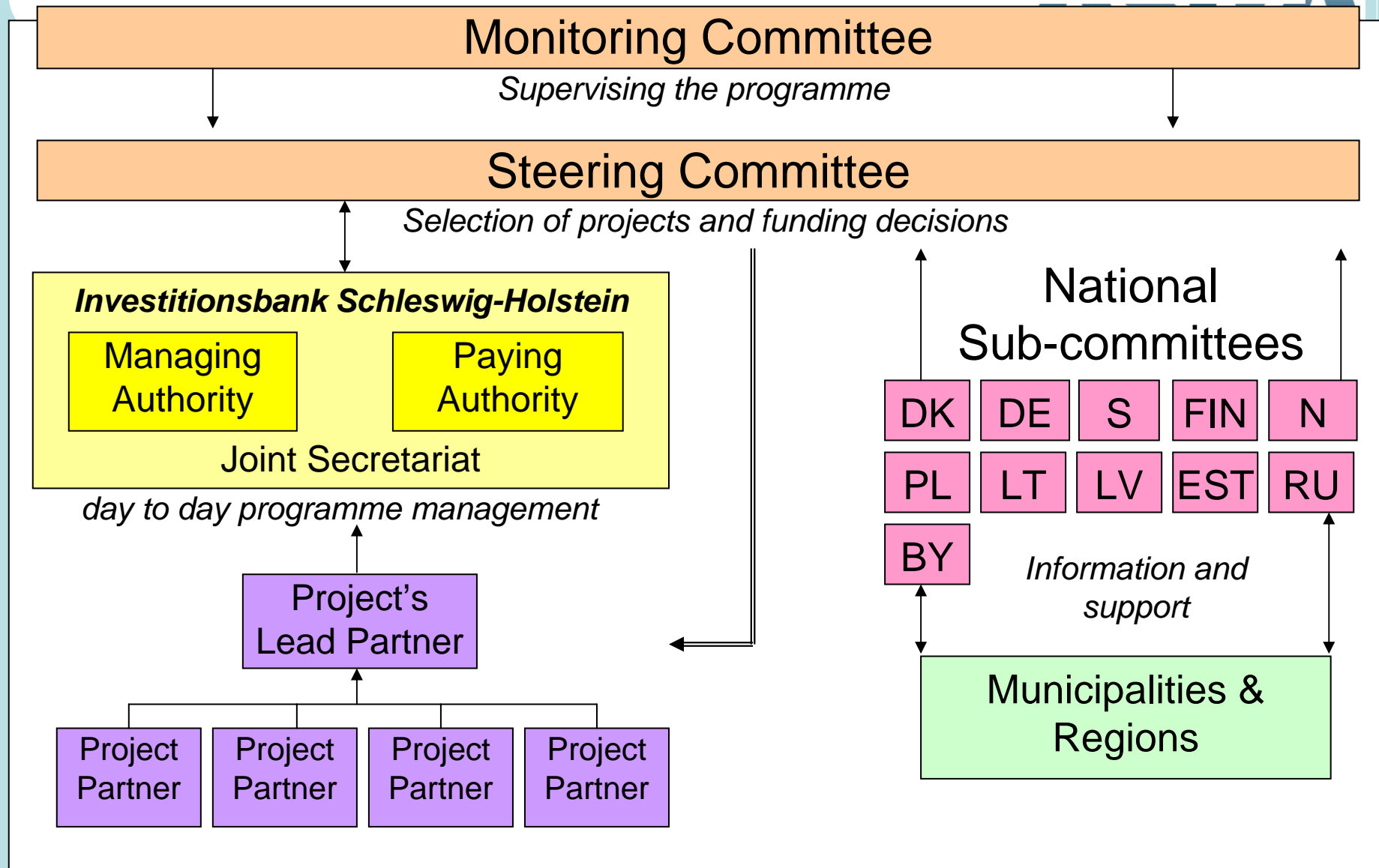
- Denmark
- Sweden
- Finland
- Germany (North – East)
- Estonia
- Lithuania
- Latvia
- Poland
- Norway
- Belarus (North – West)
- Russia (North – West & Kaliningrad)



Strategic objective:

Strengthening economic, social and spatial cohesion by promoting transnational economic relationships in order to reach an increased level of BSR integration and to form a region with sustainable growth prospects.

BSR INTERREG III B management structure



ASTRA- Motivation

- ≡ New development in climate policy towards adaptation (e.g. Finnish national adaptation strategy):
- ≡ New research on climate change impacts (e.g. Arctic Climate Impact Assessment, FINADAPT)
- ≡ New possibilities and acute need to downscale global climate change: what are the regional and local impacts? What can be done?
- ≡ Recent extreme climate events in the BSR
- ≡ Encouraging results of the SEAREG and ESPON projects

Project objectives – general

1. Assess and illustrate impacts of climate change in the BSR
2. Raise awareness of climate change impacts and adaptation issues
3. Link climate change adaptation to spatial planning mechanisms which can be implemented by the partners in the BSR
4. Recommend suitable adaptation policies and strategies at BSR, national, regional and local levels

Expected outcome (application form)



- ≡ 1. Methods and tools for spatial planning taking into account long term socio-economic and environmental climate change effects.
- ≡ 2. Presentation of climate impact research results for the BSR and strategies to adapt to the consequences of climate change effects.
- ≡ 3. Development of pan-Baltic adaptation strategy and providing country specific national strategies.
- ≡ 4. Climate Impact studies for each case study city or region (Cities of Gdansk, Raahel, Loviisa, Espoo, Klaipeda, Tallinn
Pirkanmaa Region, Pärnu Maa, Estonian archipelago, Curonian spit, Oder river basin, Salaca river basin).

Project phases

Phase 1: Screening phase

≡ Milestone 1 – June 2005 to December 2005

Phase II: Impact and vulnerability assessment

≡ Milestones 2,3 (January 2006 to December 2006)

Phase III: Development of adaptation strategies

≡ Milestones 4, 5 (January 2007 to December 2007)

Structure: Work packages

- ≡ WP 1: Adaptation strategies for regional planning purposes
- ≡ WP 2: Dissemination
- ≡ WP 3: Development of Adaptation Policies for the Baltic Sea Region

WP1 : Adaptation strategies for regional planning purposes



- ≡ Impact , Vulnerability and Risk assessment on different spatial scales: National / Regional / Local Scale
- ≡ Covering the BSR countries with local and regional pilot studies combining planning issues and CC impacts
- ≡ Development of national, regional or local adaptation strategies
- ≡ Development of regional and local planning models, tools and instruments - Implementation of case studies to trial adaptation strategies and test measures

WP 2 : Dissemination

- ≡ Raising Awareness: Ensure that the need for adaptation to climate change is perceived
- ≡ Lessons learnt of SEAREG, ACIA, FINADAPT, UKCIP, ESPACE and other European / international programmes and projects
- ≡ Organization of conferences & workshops need for implementing adaptation strategies amongst policy makers, the public and spatial planning practitioners
- ≡ Website, Project leaflet, Newsletter, Publications
- ≡ Detailed project working plan (wanted from the JS)

WP 3: Development of Adaptation Policies for the BSR



- ≡ Policy lessons of the last winter storm (January 2005)
- ≡ Comparative study of existing national policies and policy development for CC adaptation
- ≡ Holistic approach: Linkages to existing EU instruments (e.g. WFD, ICZM)
- ≡ Transformation of the impact results (WP1) into policy guidelines
- ≡ Policy recommendations for decision makers
- ≡ Pan-Baltic climate change adaptation & mitigation strategy

Project partners

- ≡ Lead partner : GTK
- ≡ Inner circle partners
- ≡ Outer circle partners
- ≡ Interest groups

Lead partner

Geological Survey of Finland(GTK):

is the national geological organization of Finland and one of the leading service centres in applied earth sciences

Lead partner: organisation, coordination, Finnish case studies

- ≡ Project co-ordinator: Philipp Schmidt-Thomé
- ≡ Project manager: Michael Staudt
- ≡ Researchers: Hilikka Kallio, Satu Putkinen, Johannes Klein
- ≡ Financial manager: Henna Koskiniemi (Friday)

Lead partner

full financial and legal responsibility for:

- ≡ project management system
- ≡ submitting Application Form
- ≡ signing the Subsidy Contract
- ≡ reporting of the project progress
- ≡ Requesting payments

Inner circle partners

partners involved with own budget

YTK (Centre for Regional And Urban Studies)

The Potsdam Institute for Climate Impact Research (PIK)

University of Latvia, Riga, Department of Geography and Earth Sciences

Tallinn Pedagogical University, Institute of Ecology, Tartu Department

Geological Survey Of Estonia (EKG)

Environmental Centre for Administration and Technology (ECAT)

Vilnius University, Department of Hydrology and Climatology

Polish Geological Institute (PGI), Gdansk

Baltic Sea Research Institute Warnemünde (IOW)

Institute of Geology & Geography, Vilnius

Cities of Raahel, Espoo, Kokkola

Klaipeda city municipality

Pirkanmaa Regional Environment Centre

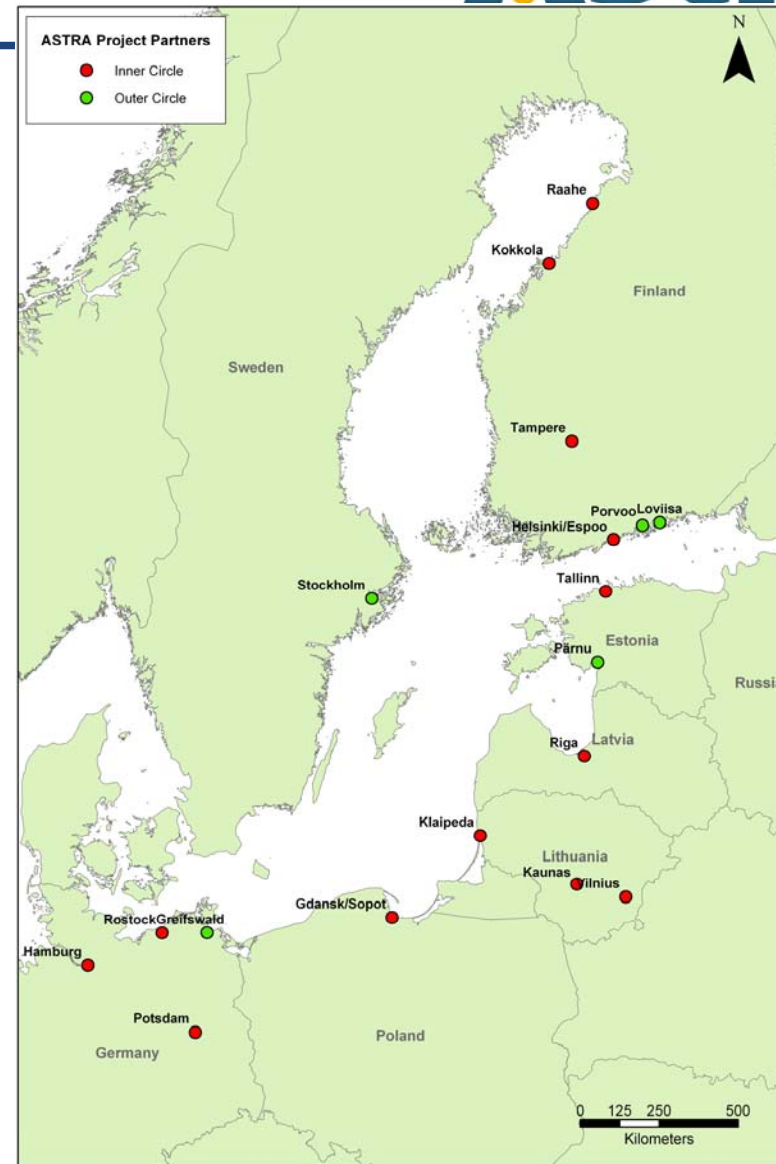
02/11/05

Inner partners-cont.



Regional Council of Uusimaa

The Association of Finnish Local and Regional Authorities



Outer circle partners

partners not having their own budget

- ≡ Riga City Council
- ≡ Voivodship Inspectorate of Environmental Protection, Szczecin
- ≡ Swedish Environmental Protection Agency
- ≡ Regional Planning Office Vorpommern
- ≡ City of Helsinki
- ≡ City of Loviisa
- ≡ Office of Regional Planning and Urban Transportation, Stockholm County Council
- ≡ City of Pärnu
- ≡ City of Gdansk, Gdansk Development Agency
- ≡ City of Sopot
- ≡ Infosab Ltd., Latvia
- ≡ Regional Council of East Uusimaa
- ≡ The Association of Finnish Energy Industries
- ≡ Office for Environment and Nature Rostock
- ≡ County Administrative Board, Dep. of Risk Prevention, Stockholm
- ≡ City of Tallinn

Case studies

Overall BSR Region: Winter storm (7.01-9.01.2005) study

Description, Impacts, Consequences for each country

Finland: Flood prone area , extreme precipitation events, sea level changes, responsibility issues (Espoo, Kokkola, Raahe)

Poland: Flood prone areas in the Vistula Delta, Future water supply of Gdansk, Oder river Basin

Estonia: Impact on Estonia Archipelago, Pärnu Maa, City of Tallinn (National Strategy/Regional Impact)

Lithuania: Impact on Curonian Spit, (National Strategy/Regional Impact)

Latvia: Salaca river basin (National Strategy/Regional Impact)

Germany: Oder river Basin (National Strategy/Regional Impact)

Case studies -cont.



ASTRA Project Case Study Areas



Consortium agreement (CA)

≡ Subsidy contract is part of the CA

Contractual matters include:

≡ sub-contracting

≡ Obligations and responsibilities of each partner (project plan from each partner - Milestone 1 of WP1)

≡ Disclosure of the Project's results during and after the project

≡ Publications

≡ Role of the outer circle partners (have to be involved in each partner's project plan)

≡ Delay and non-fulfillment of a partner

≡ other legal matters

Project steering group

≡ Nomination of WP leaders and country co-ordinators

Lead partner: project co-ordinator, project manager, financial manager

WP 1:

WP Leader

ASTRA Finland

ASTRA Estonia

ASTRA Latvia

ASTRA Lithuania

ASTRA Poland

ASTRA Germany

WP 2

WP Leader

WP 3

WP Leader

Thank you!



Michael Staudt
Betonimiehenkuja 4
02151 Espoo, Finland

Tel.: +358 20 550 2341

Fax: +358 20 550 12

Email: michael.staudt@gtk.fi

www.gsf.fi